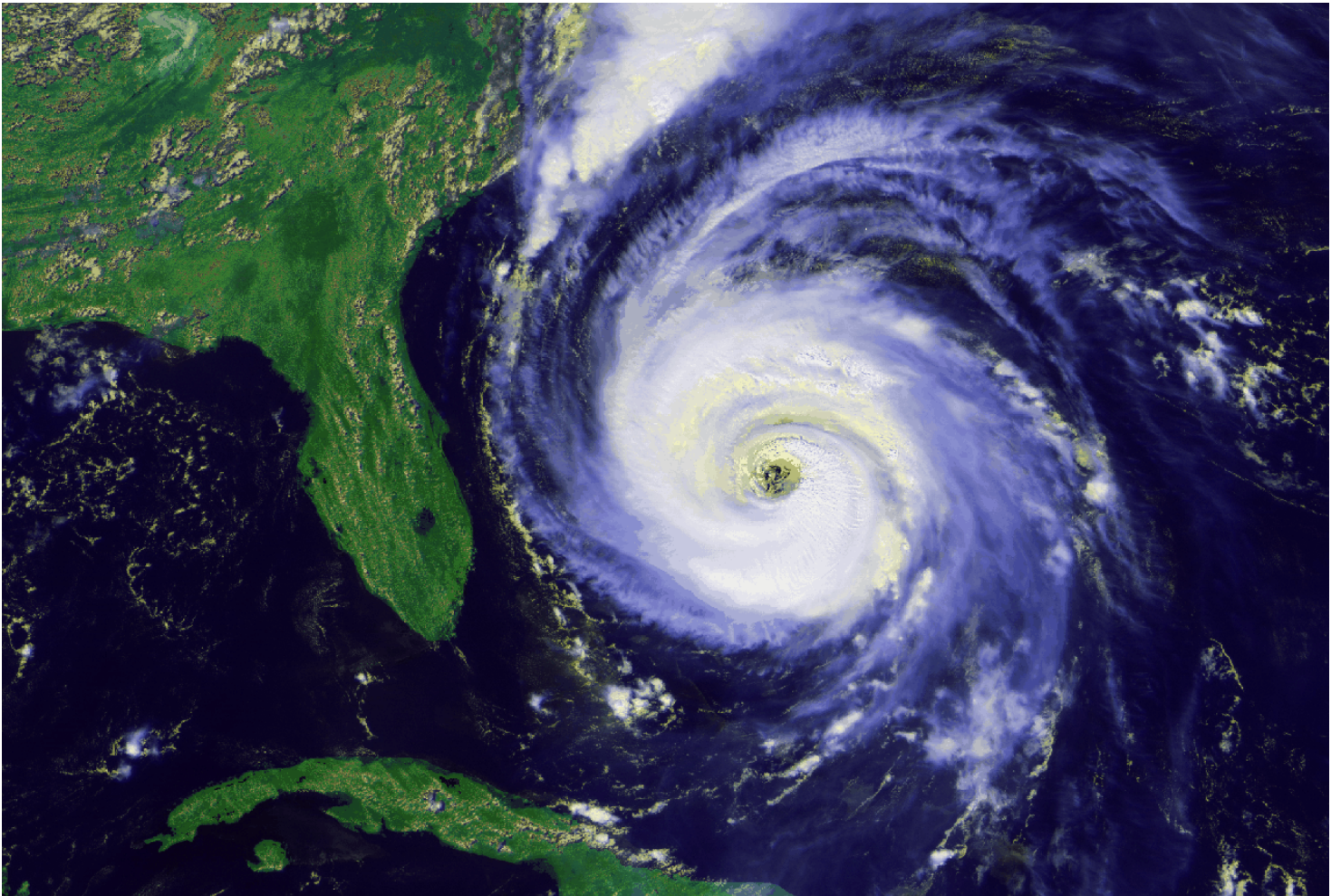


# PEET BROS. COMPANY, INC.



**ULTIMETER<sup>®</sup> Weather Instruments**

The best in *affordable* weather technology.

*“Keep a weather eye on Peet Bros.”*



ULTIMETER PRO Anemometer

## “All weather is local.”

Weather information from radio or TV stations 10 or 20 miles away often differs greatly from your local conditions. As your *on-site* weather monitor, a Peet Bros. *ULTIMETER* Weather Station can alert you when a plunging barometer suggests an immediate, serious storm threat...when to secure vulnerable property from threatening wind conditions...when to curtail outdoor activity because of dangerously low wind chill readings—and much more.

Thank you for your interest in our exciting line of *ULTIMETER* Weather Stations, that so many users are finding invaluable in their homes and businesses.

We believe you'll find this catalog includes just the right amount of technical information so you can make wise, informed decisions. However, should you have any questions, please call us toll-free at **1-866-446-1216** 8am-5pm Eastern, M-F. Our knowledgeable staff will be glad to help you.

If at all possible, do plan to **visit us online at [www.peetbros.com](http://www.peetbros.com)**. You'll find a wealth of information, including complete owner's manuals, comparisons, and technical support information for your *ULTIMETER* Weather Station. You may also place orders online 24/7 using our secure server.

You can order with confidence—we've been outfitting people with precision weather instruments for over 30 years. We guarantee your satisfaction.

*The Team at Peet Bros.*



ULTIMETER 2100 Weather Station Keyboard/Display

## What makes the *ULTIMETER*

Every *ULTIMETER* system is superior to any other in its price range. Some of our systems accept more sensor options than others, *but the sensors employed in all our systems are identical*. And all key design elements are the same, so every *ULTIMETER* system is easier to install, easier to use, more accurate, and will provide more data than similarly priced competitors' systems.

### Our keyboards do more

Our keyboards feature individual molded keys that look better, feel better and work better than cheaper, flat “membrane” keypads. But the powerful microprocessor inside is the real “key” to solving a troubling problem and much more.

**Here's the problem:** Often you may wish to save the extreme readings from a big storm to show colleagues and friends days or weeks later.

**Here's the *ULTIMETER* Solution:** Our weather stations save those extremes, employing nine separate banks of high/low memory. *Without using a computer*, you can easily check: •All of today's - *and each of the previous seven day's* - highs, lows, and daily rainfall •All the long term highs, lows and the cumulative rainfall since each was last reset •The time and date each high and low occurred. And you can reset each long term high and low individually or simultaneously, using a handy master reset.

**They provide accurate wind gust readings.** It's relatively easy to measure the speed of a *steady* wind, much harder to capture high wind gusts accurately. Other systems may report errors as large as 30%, because their less capable processors only measure short-term average wind speed, missing peak gusts. But our weather stations, like the most expensive commercial systems, calculate wind speed without averaging, thus capturing high wind gusts with pinpoint accuracy.

**They warn of possible local flooding.** You can depend on our *exclusive “Flash Flood Alert”* to give you the earliest reliable warning of potential local flooding when there is sustained heavy rain. Just add Peet Bros.' remarkable “PRO” or “TB” rain gauges shown on page 6.

**Their unique 7-mode serial data output supports:** • The Weather Picture • **WeatherText™** weather report output every minute (see p. 10) • **WeatherText™ Tools** software for weather data logging, point-to-point remote collection, Internet reporting, automatic emailing of weather reports, packet radio transmission (APRS), and other special applications.

**They're easy to power – at home or away.** All *ULTIMETER* systems will operate from a 12-volt ac adapter (included), an automotive or other 12-volt electrical system or an internal 9-volt backup battery (not included).

### Easiest to install and easiest to use

Just place our patented wind sensor over the top of a TV or FM antenna mast, rotate it until the reference mark points north, and pull down the clamping ring. With no tools required and nothing to corrode, the wind sensor is easily detachable. It's equally easy to

# Weather Stations superior?

view its data: for current wind speed, simply tap the key showing the anemometer icon. Then just tap the UP arrow for today's highest wind, the time it occurred, and today's date. Tap it again to see yesterday's data, and repeatedly for the long-term data.

## The most reliable, accurate sensors

The quality of the data you receive can only be as high as the quality of the sensors in your system. *That's why Peet Bros. pays a premium to bring you absolutely the best sensors available.*

### The Best Wind Sensor: **ULTIMETER "PRO"**

Our new **ULTIMETER "Pro"** Anemometer features exceptional response in all wind conditions, including very low wind speeds. Unlike conventional wind sensors, our patented digital design has no potentiometer or other friction contacts to wear out. It features bearings that are virtually corrosion proof, with self-lubricating Delrin<sup>®</sup> races and surgical steel balls. The precision-molded housing of UV-resistant Lexan<sup>®</sup> will resist the harshest elements for many years. Utilizes top-quality electrical components, including two ultra-reliable, glass enclosed, hermetically sealed, magnetically operated reed switches.

### The Best Temperature Sensors

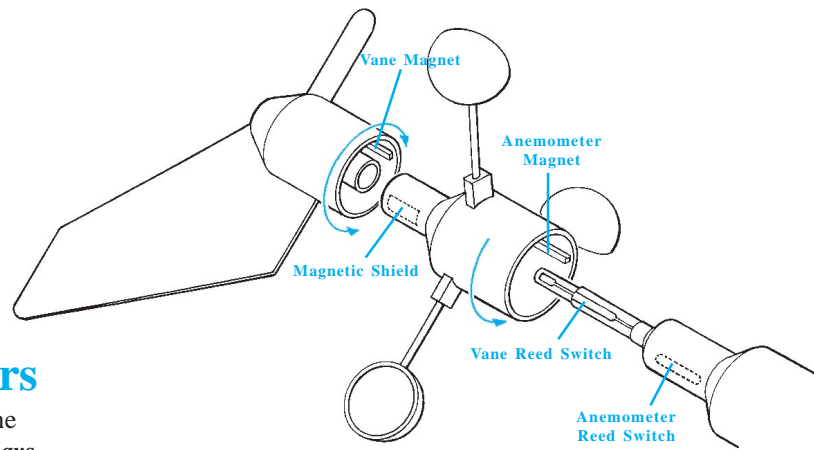
**ULTIMETER** temperature sensors are interchangeable, aged, precision thermistors. While other manufacturers encourage users to recalibrate temperature readings because their sensors aren't interchangeable or completely stable, our systems don't require adjusting—yet maintain an accuracy of 0.5° F—two to four times better than others!

### The Best Rain Sensors (optional)

As you'll see on page 6, Peet Bros. offers a choice of superior rain gauges—from our self-emptying "PRO" with no moving parts and an optional heater, to our proven tipping bucket rain gauge.

### The Best Pressure Sensor (**ULTIMETER 2100** only)

Unlike other systems that only indicate a 1 hr. "trend arrow," our precision laser-calibrated sensor is so stable and accurate that we can display the **numeric value of pressure change over a full 3-hour period per National Weather Service standards.**



How our superbly reliable wind sensor works: A reed switch is a long-lived, hermetically sealed switch that actuates when a magnet is brought near it. The anemometer reed switch is normally open, whereas the centered vane reed switch is normally held closed by the strong vane magnet, regardless of wind direction. During each revolution of the cups:

- The anemometer reed switch closes briefly as the anemometer magnet approaches, then reopens when the anemometer magnet has passed. This actuation always occurs at the same angular position of the cups.
- The vane reed switch opens briefly, then closes again as the magnetic shield passes between it and the vane magnet, absorbing the magnetic field. The timing of the vane reed switch is determined by the angular position of the vane magnet, which is in turn determined by wind direction.

Wind direction is calculated (with a resolution of 1.4 degrees) by comparing the relative timing between operation of the two reed switches.

### The Best Humidity Sensor (optional on 2100 and 800)

Our optional humidity sensor is a precision humidity-sensitive, polymer *capacitor* that has a wider sensing range than the resistive sensor that others use, so you get accurate readings, even at the all-important extremes—from 0 to 100% R.H.

## Why Use Cabled Sensors?

A number of consumer-grade weather stations now use wireless sensors, promising faster installation. Why doesn't Peet Bros.?

It's because we and our customers have found that there is no substitute for the reliability and performance of cabled sensors. Although the price of our systems represents great value for everyone, we remain committed to meeting the needs of serious amateur and professional weather observers, who demand dependability and low maintenance. Professional or not, few people are likely to be really pleased with a weather station that interferes with television reception... or requires periodic replacement of back-up batteries in hard-to-reach outdoor sensors... or fails to work when the sun is blocked by prolonged periods of harsh weather or by ice and snow on the solar cells themselves. As one experienced weather observer put it, "The bitterness of intermittent data loss from wireless sensors remains long after the sweetness of faster installation is forgotten."

## Now, configure a system for your present and future needs

With Peet Bros. you can configure an **ULTIMETER** system to meet your present needs and budget without locking yourself in. Our expansion and trade-up options let you modify your system economically whenever you wish. At each step along the way, you'll enjoy knowing that your system is the very best.



Basic components of all **ULTIMETER** Weather Stations include: keyboard/display unit with desk stand, wind sensor, outdoor temperature sensor, plug-in cables, AC adapter, cable ties, installation and operation manual. You can add enhancements from a wide array of optional sensors and accessories, configuring a system to meet your exact needs and budget.

# THE ULTIMETER WEATHER STATIONS



## ULTIMETER 2100 with WeatherText™

**\$399**

Our top-of-the-line *ULTIMETER 2100* system gives you all the other advantages outlined on pages 2 and 3, plus a superb precision barometer with:

- a *preset storm alert* to warn you if the pressure falls more than 0.18" in 3 hours.
- the all-important *numeric 3 hour pressure change*, in accordance with National Weather Service standards.
- *today's, and previous 7 day's, highest and lowest pressure readings plus interesting extremes from days or weeks before, all with time and date of occurrence.*
- *platinum-tone housing with brilliant blue display backlighting.*
- *illuminated keypad* provides exceptional visibility in *darkness or low-light conditions.*
- an *adjustable pressure change alarm plus adjustable alarms for both high and low pressure.*
- *Readings in inches or millimeters of mercury, millibars or hecto-Pascals.*
- **WeatherText™** serial data (RS-232) output weather report capability.

### ULTIMETER SYSTEM SPECIFICATIONS

FUNCTION	SPECIFICATIONS & NOTES
<b>Wind Speed</b>	Range: 0.2-160.0 mph (0.1-71.0 m/s) (Pro) Threshold: 1.5 mph (0.6 m/s) (Pro) Accuracy: ± 2 mph (0.9 m/s) or ± 5 %, whichever is greater, 40 ft. cable standard*
<b>Wind Direction</b>	16 point analog compass rose; Serial data output resolution: 1.4°F
<b>Wind Chill</b>	-150°F to +50°F (-101°C to +10°C)
<b>Humidity - Outdoor</b>	0 to 100% ± 5%; with 40 ft. cable standard*
<b>Dew Point</b>	Same Units as Temperature
<b>Humidity - Indoor</b>	Same as Outdoor Humidity; with 15 ft. cable*
<b>Temperature - Outdoor</b>	-55° to +150° F (-48° to +66° C) Accuracy: ±0.5° F Resolution: 1°F or 0.1°C on display 0.1°F in serial data with 25 ft. cable standard*
<b>Temperature - Indoor</b>	As above, however the keyboard itself should not be exposed to extremes. A remote "indoor" sensor option is available.
<b>Pressure</b>	27.5 to 31.5 inHg 931.3 to 1067.0 hPa/mbar 698.5 to 800.0 mmHg
<b>Rain</b>	Units: inches, millimeters
<b>Build-in Static Protection</b>	Protective components in junction box run incidental static electricity to ground through TVS diodes
<b>Electrical Alarm Signal</b>	+5 volts, on for 1 minute (2100 only)
<b>WeatherText Serial Data</b>	YES
<b>Illuminated Keys</b>	2100 and 800 only
<b>Bright Blue LCD Backlight</b>	2100 and 800 only

\* We'll gladly supply custom cable lengths quickly and economically.

### ULTIMETER® Weather Station Features by Model

	ULTIMETER® 100	ULTIMETER® 800	ULTIMETER® 2100
Wind Speed	•	•	•
Wind Direction	•	•	•
Wind Chill	•	•	•
Humidity - Outdoor	n/a	Opt	Opt
Dew Point	n/a	Opt	Opt
Heat Index	n/a	Opt	Opt
Humidity - Indoor	n/a	Opt	Opt
Temperature - Outdoor	•	•	•
Temperature - Indoor	Opt	•	•
Barometric Pressure	n/a	n/a	•
Rain	Opt	Opt	Opt
Alarms	•	•	•
Alarm Output Signal	n/a	n/a	•
APRS-Ready	•	•	•
Serial Data Input/Output	•	•	•
WeatherText Serial Data	•	•	•
Illuminated Keypad	n/a	•	•
Bright Blue LCD Backlight	n/a	•	•



## ULTIMETER 800 with WeatherText™

**\$299**

The *ULTIMETER* 800 is an exceptional value. It includes all the outstanding features outlined on pages 2 and 3, tracks more than 90 weather values, and will provide the same data as our top-of-the-line '2100', except for barometric pressure. And if you later find you need pressure readings, you can trade up your 800 keyboard for a 2100 keyboard and continue to use all your existing sensors. We invite you to consider the Model 800 with **WeatherText™** serial data output. You'll find it combines:

- A very attractive price—it will fit your budget.
- Superb performance—you'll be proud of it.
- Bright blue display backlighting and illuminated keypad
- Unparalleled expansion capability - you won't outgrow it.

"Just want to inform you that the *ULTIMETER* weather station performed perfectly during Hurricane Debby. When daylight arrived, I raised my HAM antenna, fired up the computer and brought up the charts that the *ULTIMETER* had

compiled while I was down. It pinpointed the exact time of the wind shift, wind speed changes, and the low barometric pressure. This info I was able to forward in a timely manner by radio to the National Hurricane Center via W4EHW. I think it is great stuff!"

—B.H., St. Eustasius, Netherlands Antilles



## ULTIMETER 100 with WeatherText™

**\$229**

Perhaps you just need a very basic weather station – wind speed, wind direction, outdoor temperature and possibly rainfall. Even so, you have every right to expect that your system will be just as reliable and accurate as the most elaborate top-of-the-line system. Rest assured that our *ULTIMETER* 100 uses the same top quality sensors and the same great data processing as our renowned 2100 system, including **WeatherText™** serial data output. It is unsurpassed as a basic electronic weather station for the professional or serious amateur weather observer.

"I have a comprehensive *ULTIMETER* system, including the Weather Picture, which I use in the Bahamas. We were in our house on Man O' War Cay, Abaco, when Hurricane Floyd hit with winds registering 134 mph. Watching the barometer sink and rise as the eye passed over us was quite an experience! I love your whole system, and have become the local "honesty" weather reporter."

—J.P., Abaco, Bahamas

## OPTIONAL SENSORS AND ACCESSORIES

### The **ULTIMETER "PRO"** Rain Gauge



Peet Bros.' remarkable "PRO" rain gauge is self-emptying, yet it has *no moving parts*. Whereas tipping bucket gauges lose accuracy as the rain rate increases, the "PRO" senses each 0.001" of rain and *accurately records rain rates of more than 10" per hour!* It has no calibration adjustments of any sort; the accuracy is molded in.

Accuracy of the "PRO" gauge starts at the collection funnel which has parabolic side walls, to trap wind driven rain. The rainwater passes into a precision drop forming tube, much like the intravenous feeding unit in a hospital, that creates precisely formed drops, each exactly 0.001" of rain.

Each drop falling from the tube splashes across four gold-plated sensing rods, then out the bottom of the gauge. The gauge counts each drop and reports every tenth drop (0.01 inch of rain) back to the *ULTIMETER* keyboard.

All self-emptying rain gauges need to be kept clean if

they are to work properly, and the "PRO" gauge is no exception. The difference is that the "PRO" is so easy to maintain. Other types of rain gauges must be cleaned "on site", because the mechanism can't be disassembled. With the "PRO", you can remove the filter screen (or even the entire precision drop forming tube) in seconds, take it inside to clean it off, and reassemble the gauge, again in seconds – all with no tools. There's never been a rain gauge like the "PRO"! Supplied with 40 ft. cable. Approx. size: 5.13"H x 4.5"Dia. (max).

### **Universal Mounting Bracket** (Optional)

Allows the PRO Rain Gauge to be attached to any vertical surface: mast, vertical wall, fence post, or tower. Made of sturdy powder-coated aluminum. Includes mounting hardware: u-bolts for 1.25" pole, tower, or chain link fence; screws for wooden posts, wood fences, walls, etc.

**\$15**



**\$90**

### **ULTIMETER Heated "PRO" Rain Gauge**

As above, but with a built-in, thermostatically-controlled, 18 watt heater for use as a snowmelt gauge. Heater power is supplied over a separate line from an included ac adapter (24-volt ac output, 1 amp).

**\$190**

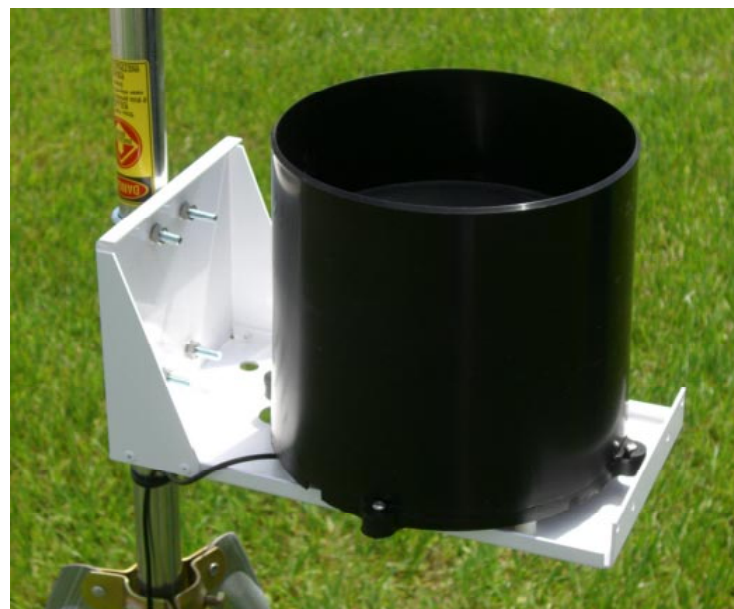
### **ULTIMETER Tipping Bucket Rain Gauge (TB)**



Proven tipping bucket gauge measures rain in 0.01" increments. Supplied with 40 ft. cable and mounting screws. Approx. size:

7.5"H x 8"Dia.

**\$90**



### **TB Rain Gauge Mounting Bracket**

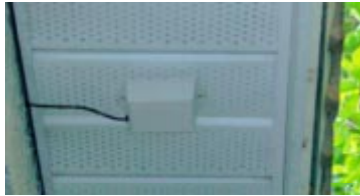
Sturdy powder-coated aluminum bracket, for mounting the TB Rain Gauge on 1 1/4" antenna mast or vertical wall. **\$39**

## OPTIONAL SENSORS AND ACCESSORIES



### ULTIMETER TB Sensor Combo

Sensor Combos include our two most popular optional sensors (Rain Gauge and Humidity) and provide a convenient way of mounting all outdoor weather sensors on a single pole with a single cable. Includes TB Rain Gauge (shown left), and Humidity/Temperature Sensor in a Solar Radiation Shield (40-ft. sensor cables, other lengths available). Features a rugged metal sensor mounting bracket which attaches easily to a 1 1/4" mast (u-bolts included) or vertical wall. Order mast and tripod separately (not included) **\$279**  
without Humidity Sensor **\$189**



Outdoor Humidity/Temp Sensor installed under eave

### Outdoor Humidity/Temperature Sensor

(for *ULTIMETER* 2100 and 800 only—shown below)  
Our optional outdoor humidity/temperature sensor uses a precision polymer-based capacitive sensor to provide accurate R.H. readings from 0 to 100%. Two large 2.25" ports, sealed with stainless steel filters, let moist air pass freely, while keeping out insects and debris. Includes a temperature sensor to eliminate extra wiring. With 40 ft. cable. Approx. size: 6"L x 3"W x 1.75" D. **\$110**



### Universal Extension Cable

**\$15**

Used to extend the data line of any Wind Sensor, Rain Gauge, Temperature Sensor, Rain Gauge, PC Cable, or The Weather Picture. 40-ft. long with modular plug on one end and modular receptacle on the other.

### Stainless Steel Temperature Probe

**\$95**

A 10" stainless temperature probe for measuring the temperature of soil or mildly caustic liquids. With 150-ft. cable.

### RFI Filters

6C or 8C **\$29**

Radio transmissions normally will not affect an *ULTIMETER* Weather Station's performance. But if you were to encounter interference from a nearby high powered transmitter, our small plug-in 30 dB RF Filters should solve the problem. Available in 6 and 8-conductor models.

### Indoor Humidity Sensor

Same as Outdoor Humidity Sensor (above), except with 15 ft. cable and without temperature sensor. Mounts away from keyboard to give accurate readings where needed—in a solarium, the bedroom of a person with heart or respiratory problems, or in a room of valuable antiques, stamps or manuscripts. **\$100**

### Shielded Outdoor Humidity/Temperature Sensor

Same electronic components and circuitry as our standard sensor, but mounted in a tiered, passive solar radiation shield that deflects direct and reflected solar radiation. A must for accurate readings in locations receiving direct sunlight, or when the sensor housing cannot otherwise be adequately shielded. Supplied fully assembled with 40 ft. cable and mounting bracket. Size 8" x 8" x 6". **\$159**

### Radiation Shield for Temperature Sensor

Same radiation shield as described above, but without the Humidity/Temperature Sensor. May be used to shield a temperature sensor from direct and reflected solar radiation that would otherwise degrade its readings. **\$79**



### ULTIMETER PRO Sensor Combo

PRO Rain Gauge and Solar Shielded Humidity/Temperature Sensor. Supplied with 40 ft. cables and mounting u-bolts. **\$279**

without Humidity Sensor **\$189**

"Service is very important to me, and this is one of the reasons I picked the Peet weather system over some of the others out there, because of the quality service you offer."  
—S.F., Bellefontaine, OH



# THE WEATHER PICTURE

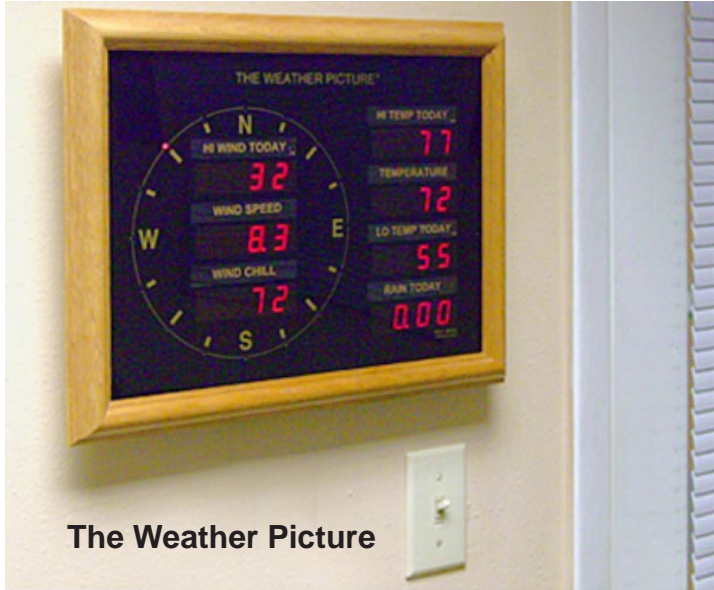
Now, put the weather on your wall!

At home or at work, our big, handsome **WEATHER PICTURE** lets you read the weather *from across the room.*

With its bright red numerals on a jet-black background, framed in solid oak or brushed aluminum, The Weather Picture is comfortably at home in any setting. This optional accessory display receives information from your *ULTIMETER* Weather Station and continuously shows all the vital weather data you have pre-selected – without your having to press a single key.

The Weather Picture's 8 inch compass rose and large 0.8 inch *illuminated* red numerals are clearly visible day or night from virtually any position in the room. It's perfect for homes as well as schools, hotels, offices, country clubs, stores, marinas, corporate lobbies, ski lodges, municipal offices, emergency management rooms, etc.—any place you or others need up-to-the-second *local* weather data.

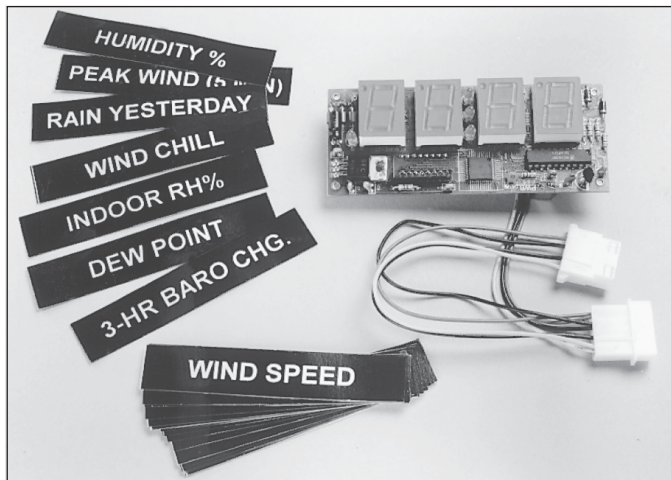
In your choice of Silver or Oak frame **\$389**



The Weather Picture

## DESIGNED TO MEET YOUR PRESENT AND FUTURE NEEDS

Seven large Digital Numeric Displays (see photo below) can be set and labeled to select the exact data items and measurement units you desire to display (any of 62 different functions). You can change the functions shown on each of the seven displays, to show the data most important to you now, with the change of seasons, or when you add a new sensor to your Weather Station.



Numeric Display Modules are all identical. Each includes a microprocessor, four LED digits, and 8 small switches to select which weather value will be displayed. Matching label slips into a recessed holder.

## SPECIFICATIONS

The Weather Picture requires serial data output from an *ULTIMETER* Weather Station - Model 2100, 2000, 800, 100, or older Model 500 or *ULTIMETER II*. Two styles are available, in either a stylish brushed aluminum (silver nameplate) or handsome solid oak (with gold nameplate).

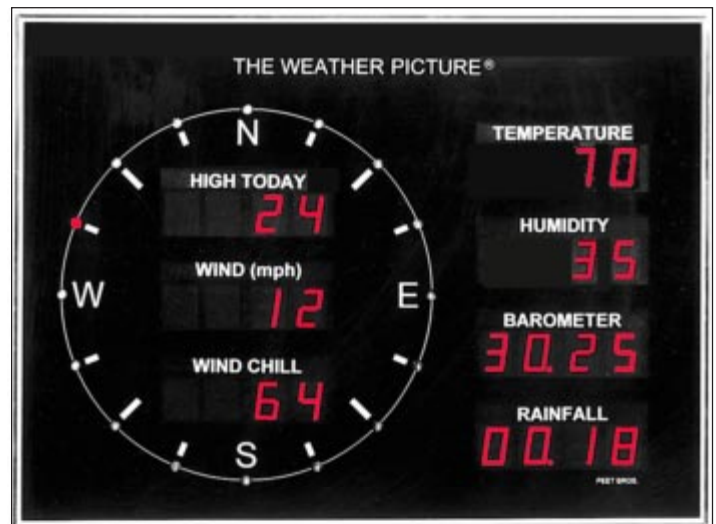
**LARGE IN SIZE**, the Weather Picture features seven Numeric Display Modules. Available in two frame styles: silver brushed aluminum (measures approx. 11.25"H x 15.25"W x 1.5"D) and solid oak (approx. 14.25"H x 18.25"W x 1.5"D).

Supplied with a 15 foot cable terminated with a power receptacle and a male modular phone plug for data input. The data line may be extended more than 120 feet, as needed, using our 40-foot Universal Extension Cables. Includes complete kit of labels, ac adapter, and easy-to-read owner's manual.

## NO KEYS TO PRESS

—**PERFECT FOR PRIVATE HOMES.** Even family members who shy from a digital watch will love The Weather Picture. One glance gives them all the data they want, without fail and without pressing any keys. Complete weather details are available at your *ULTIMETER* Weather Station keyboard—more than enough to please even the most dedicated weather buff.

—**PERFECT FOR PUBLIC PLACES.** Install it and rest easy, even in a public building filled with curious children or adults unfamiliar with this remarkable weather display. Viewers can't accidentally change settings or delete historical data, because the Weather Picture has no adjustments or buttons to press. Yet on your *ULTIMETER* keyboard *you* can privately access every weather detail.





# SENSOR MOUNTING SOLUTIONS



## ULTIMETER Unimount Sensor Array

**\$349** w/weather station

An integrated sensor array for use with any *ULTIMETER* Weather Station, the Unimount Sensor Array provides a convenient way of mounting all outdoor weather sensors on a single pole with a single cable. Includes a Wind Sensor, a "PRO" or TB Rain Gauge (shown), and a Humidity/Temperature Sensor in a Solar Radiation Shield. Features a rugged lightweight metal sensor mounting bracket which attaches easily to your mast (not included), weatherproof outdoor sensor interconnection module, indoor power connection module and a 50 ft. 8-conductor cable from the sensor array to the indoor connection.

Available as a replacement sensor array (\$476), or as a specially-priced upgrade with the purchase of a new *ULTIMETER* 800 or *ULTIMETER* 2100 weather station (\$349). Order mast and tripod separately (not included).

## Single Cable Kit

A reliable alternative to wireless sensors, the Single Cable Kit reliably carries all sensor data on only one cable running from outdoor sensor junction box to indoor keyboard display unit. Includes weatherproof sensor connection box and power connection box for connection to indoor keyboard. (Order desired-length 8C Junction Box Cable separately.)

**\$49**



## Tripod for Mast

A 5-ft. tripod for erecting mast. Made of sturdy 1 1/4 inch dia. galvanized steel. Accepts masts up to 1 3/4 inch dia. Made in USA (mast not included)

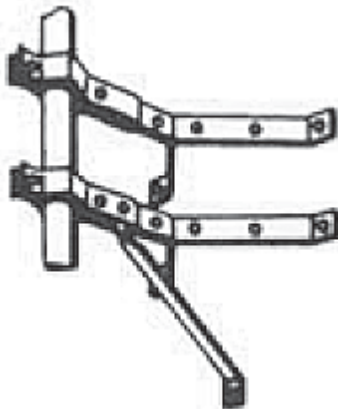
**\$69**



## Sensor Mast Pole

A 5-ft. long mast pole, of 1 1/4-inch galvanized steel tube. For mounting anemometers, solar radiation shielded sensors, rain gauges, Sensor Combos, and Unimount Sensor Arrays. Made in USA.

**\$19**



## Wall-Mount Bracket for Mast

Use to attach a 1 1/4 inch dia. sensor mast pole to a vertical wall. Made of sturdy galvanized steel. Double Y-bracket configuration with extra "third leg" support. Manufactured in USA (mast not included)

**\$39**

## Eave-Mount Bracket for Mast

Use to attach a 1 1/4 inch dia. sensor mast pole to the eave of a roof. Made of sturdy galvanized steel. Made in USA (mast pole and wind sensor not included)

**\$39**

"I have to say that it was a pleasure dealing with your people there. I am in the computer industry, and have to deal with tech support people every day. Most of them could take lessons from Peet Bros. Company. Thanks again for your good service."

—J.S., Tarpon Springs, FL



## Introducing the *ULTIMETER*<sup>®</sup> Weather Stations with WeatherText<sup>™</sup>

Peet Bros. Company, Inc. is pleased to announce the latest innovation in our world-class weather stations:

# WeatherText<sup>™</sup>

**WeatherText<sup>™</sup>** is an RS-232 serial data output mode in which the instrument puts out one human-readable (text) Weather Report each minute. Unlike a proprietary hexadecimal data packet which requires application software to decode, the WeatherText<sup>™</sup> report is the ultimate in weather data portability.

The serial text output is viewed on the monitor of a PC using terminal software such as HyperTerminal (located on your Windows PC at Start/Programs/Accessories/Communications/HyperTerminal), or transmitted as a data packet which requires no application software at the receiving end to decode the data. The text output may be “captured” and saved as a .txt file for later viewing or printout.

**WeatherText<sup>™</sup> Tools** is a Windows PC application which enhances the capabilities of WeatherText<sup>™</sup>:

**WeatherText<sup>™</sup> Data Logger:** a data acquisition tool which generates and archives log files of weather data in two convenient file formats: .txt (for convenient viewing using word processor or IE) and .csv (for instant analysis, charting, and graphing on Microsoft Excel or other spreadsheet program)

**WeatherText<sup>™</sup> Internet:** an FTP utility which transfers the WeatherText<sup>™</sup> reports to a web server at scheduled intervals (in both .txt and .csv file formats).

**WeatherText<sup>™</sup> Mail:** an email application which automatically sends WeatherText<sup>™</sup> reports to selected email addresses at scheduled intervals. Share critical weather data from your *ULTIMETER* with personal contacts, weather bureau, or Emergency Management Agency.

**WeatherText<sup>™</sup> APRS:** a tool which automatically generates a weather report, properly formatted to be transmitted via APRS (Automatic Position Reporting System), an amateur radio technology developed for efficient transmission of data packets. Requires use of UI-View32 software or compatible equivalent.

Each **WeatherText<sup>™</sup> One-Minute Report** includes all current values, plus the highest wind speed over the past minute with the associated wind direction, the average wind speed over the last minute, the 3-hour barometric pressure change, today’s and long-term rainfall, today’s highs and lows, and current time and date. In addition, each time a key combo is pressed, a comprehensive **WeatherText<sup>™</sup> Complete History Report** is output (contains highs and lows for the previous 7 days plus long-term).

Following is a sample of the **WeatherText<sup>™</sup> One-Minute Report**:

```
ULTIMETER WEATHER REPORT 01/17/10 09: 32A
Wind:      Cur   8.0MPH 180Deg, 1mAvg   4.6MPH,   1mPeak   9.8MPH 176Deg
           Hi   9.9MPH 188Deg
WChill:    Cur   75.7F, Lo   75.6F
Temp Out:  Cur   75.7F, Hi   75.7F, Lo   75.6F
Temp In:   Cur   76.4F, Hi   76.6F, Lo   76.3F
Hum Out:   Cur   65.6%, Hi   65.9%, Lo   65.6%
Baro:      Cur   29.93i nHg, Hi   29.94i nHg, Lo   29.93i nHg, 3hr chg  +0.0i nHg
Dewpt:     Cur   63.6F
Heatx:     Cur   77.0F
Rain:      Today 0.21i n, Since 01/01/10: 2.57i n
```

**WeatherText<sup>™</sup> Tools** software and PC interface cable (Windows 98/XP/Vista/7) **\$69**

# SOFTWARE AND DATA LOGGING

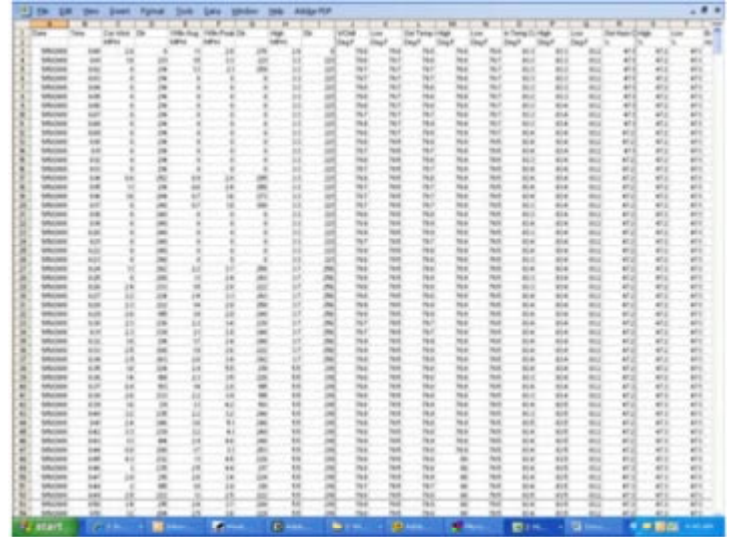
## WeatherText™ Tools Data Logger

A software package for Windows 98/XP/Vista/7/8 which enhances the capabilities of WeatherText™. In addition to logging weather data in txt and csv files, WeatherText Tools can be configured to automatically email weather reports and log files (to a list of email addresses), post weather data to a web page, and generate an APRS format weather report. Get maximum benefit from your **ULTIMETER** Weather Station with WeatherText™!

Includes ChartingWeather, a spreadsheet template to be used for generating weather data charts and graphs.



**\$69**



The screenshot shows a spreadsheet with multiple columns of data, likely representing various weather parameters over time. The interface includes a menu bar at the top and a taskbar at the bottom.

## Serial-to-USB Adapter

Connects serial data output from an **ULTIMETER** Weather Station (using the **ULTIMETER** DB9 Serial Cable) to a PC's USB port. Compatible with Windows XP/Vista/7/8.



**\$29**

## 5-Port Serial Adapter

Use for connecting up to five devices simultaneously to the serial data port of an **ULTIMETER** keyboard. (e.g. an Indoor Humidity Sensor plus a PC data logger cable, and multiple Weather Pictures or PCs)



**\$15**

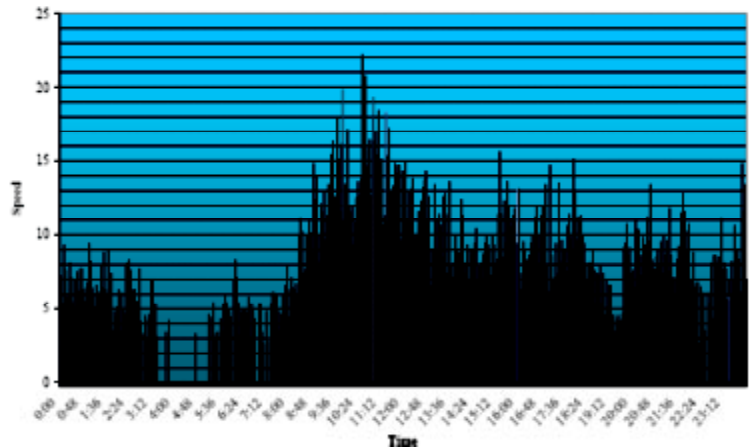
## Serial Data Cable

A custom cable used to connect the serial data output port of an **ULTIMETER** Keyboard/Display unit to the serial port (DB9) of a Windows PC or TNC. 15 ft.



**\$20**

Wind Speed



"I wish to express our thanks for Peet Bros. Company standing behind their product and fast service to our Public Safety Agency. It is great to do business with a company that backs their product and service."

—Emergency Mgmt Agency, Town of Southwick, MA

## Our promise for the future:

### We'll enhance your system, not obsolete it.

A top priority of our aggressive product development program has always been to maintain maximum compatibility with previous products. If you've ever bought an expensive camera or stereo system only to find that it's become obsolete a year or so later, you'll appreciate this pledge of support to both our old and new customers.

We continue to develop improvements and new features which are compatible with all models, past and current, and designed to operate with most installed systems, enhancing their value rather than obsoleting them.

Ask any **ULTIMETER** owner. You'll most likely hear that Peet Bros.' commitment to customer support is absolutely the best possible—not only in technical service, but in the more subtle ways that will make your **ULTIMETER** Weather Station an exceptionally sound long term investment.

## QUESTIONS?

Call us toll-free during normal business hours, Eastern time, at **1-866-446-1216**.  
Or visit our web site to learn more about our **ULTIMETER** Weather Stations.

# ULTIMETER® Weather Instruments

The best in *affordable* weather technology.



ULTIMETER 2100 Weather Station



The Weather Picture, in Oak Frame



ULTIMETER Unimount Sensor Array

For the latest and most complete information on the entire line of *ULTIMETER* Weather Instruments, and a list of our Worldwide Dealers, please visit [www.peetbros.com](http://www.peetbros.com)

"I want to compliment your product, the *ULTIMETER* 100. I have owned this weather machine since 1995 without problems. It's been through hurricanes, record snow storms, and weather exposure for 18 years. Sitting in my favorite

chair with a wood stove operating and watching the wind chill factor fluctuate between -25 and -50 degrees F is always interesting - even better with a glass of Cabernet Sauvignon ...once again, Thanks!

—S.B., Mattapoisett, MA

## **HOW TO ORDER A COMPLETE *ULTIMETER* SYSTEM**

- First, select an *ULTIMETER 2100*, *ULTIMETER 800*, or *ULTIMETER 100* Weather Station, according to the weather functions you require.
- Next, choose optional sensors as desired (**Rain Gauge**, **Humidity Sensor**, etc. - there are several models to choose from.)
- Third, consider installation options: **extended-length sensor cables**, **Single Cable Kit**, **Sensor Combos**, or **Unimount Sensor Array**.
- Finally, include desired accessories such as **THE WEATHER PICTURE**, **WeatherText Tools PC Data Logger Kit**, or **3rd-Party Data Logging/Internet Software**.

You may phone in your order to our Toll Free number: 1-866-446-1216, M-F 8-5 Eastern, or place your order on our website [www.peetbros.com](http://www.peetbros.com) using our secure server.

## **Uncle Sam Wants You!**

If you have an *ULTIMETER* Weather Station and access to the Internet, the National Oceanic and Atmospheric Administration (NOAA) needs your observations. Your "real-time" data will be used in the Citizen Weather Observer Program. Making your data available is simple and free. To obtain your personal Citizen Weather (CW) number (Radio Amateurs use their call sign), and to download free Internet communication software, visit the CWOP web site:

<http://www.wxqa.com/>

Your "real-time" data will be used in NOAA weather prediction models and will appear on their new web page:

[http://madis.noaa.gov/sfc\\_display/](http://madis.noaa.gov/sfc_display/)

**Peet Bros. Company, Inc.**

31 E. 17th Street, St. Cloud FL 34769

**Toll Free: 1-866-446-1216**

FAX: (321) 206-6219 E-mail: [peetbros@peetbros.com](mailto:peetbros@peetbros.com)

[www.peetbros.com](http://www.peetbros.com)

©2014-2015 Peet Bros. Company, Inc.